



US 20180108858A1

(19) **United States**

(12) **Patent Application Publication**  
**ITO**

(10) **Pub. No.: US 2018/0108858 A1**

(43) **Pub. Date: Apr. 19, 2018**

(54) **ORGANIC LIGHT EMITTING DIODE  
DISPLAY DEVICE AND MANUFACTURING  
METHOD THEREOF**

(52) **U.S. Cl.**  
CPC .... **H01L 51/5056** (2013.01); **H01L 2251/558**  
(2013.01); **H01L 51/0052** (2013.01); **H01L**  
**51/0059** (2013.01)

(71) Applicant: **Samsung Display Co., Ltd.**, Yongin-si  
(KR)

(72) Inventor: **NAOYUKI ITO**, Seongnam-si (KR)

(57) **ABSTRACT**

(21) Appl. No.: **15/722,543**

(22) Filed: **Oct. 2, 2017**

(30) **Foreign Application Priority Data**

Oct. 13, 2016 (KR) ..... 10-2016-0132899

**Publication Classification**

(51) **Int. Cl.**  
**H01L 51/50** (2006.01)  
**H01L 51/00** (2006.01)

An organic light emitting diode display device includes: a substrate; a first electrode on the substrate; a hole transport layer on the first electrode; an organic light emitting layer on the hole transport layer; and a second electrode on the organic light emitting layer. The hole transport layer includes a hole transport layer composition including a compound represented by Chemical Formula 1, a compound represented by Chemical Formula 2, a compound represented by Chemical Formula 3, and a compound represented by Chemical Formula 4.

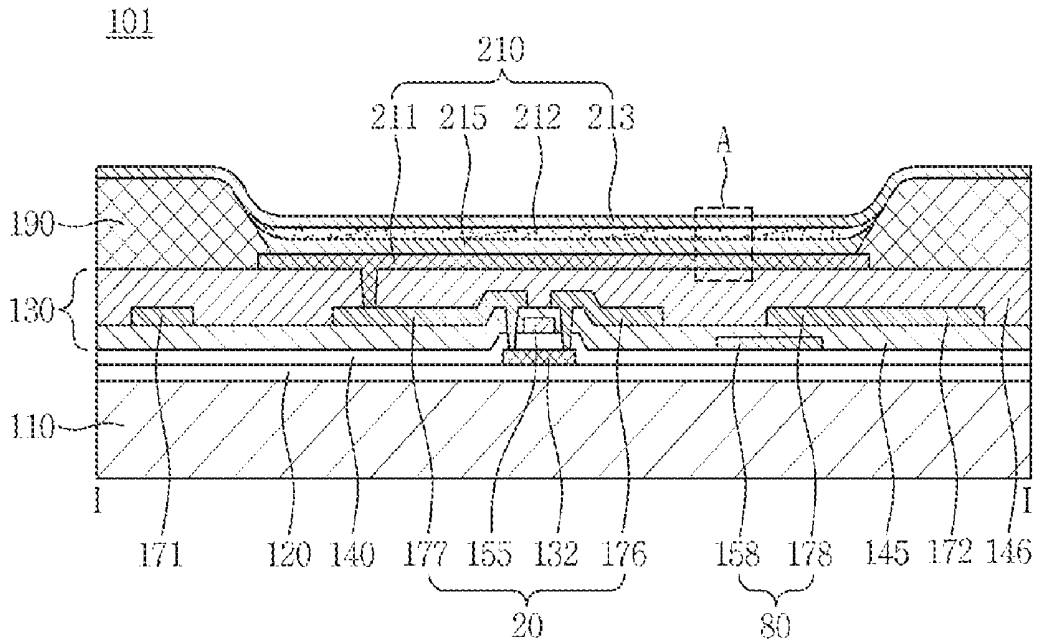


FIG.1

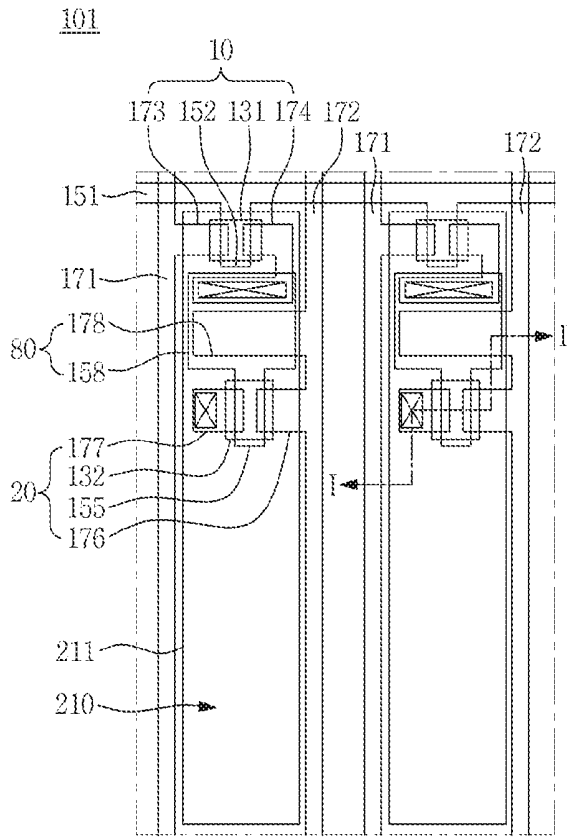


FIG.2

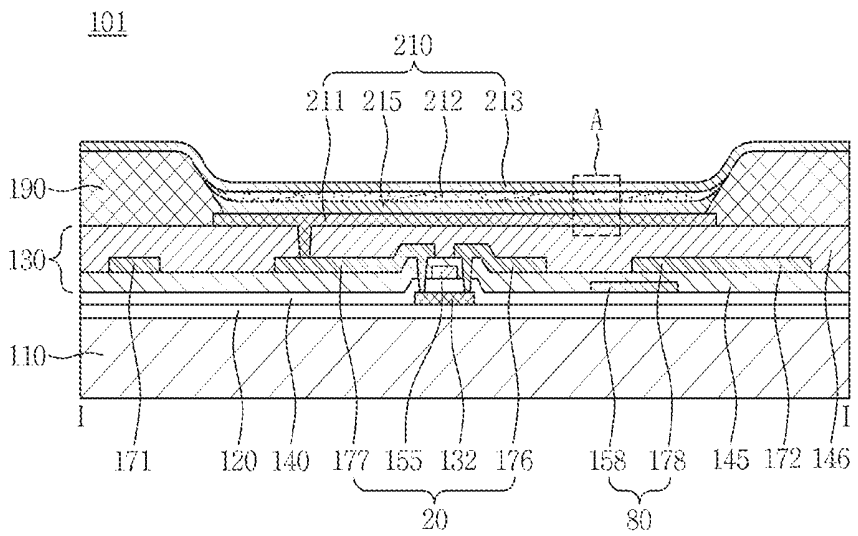


FIG.3

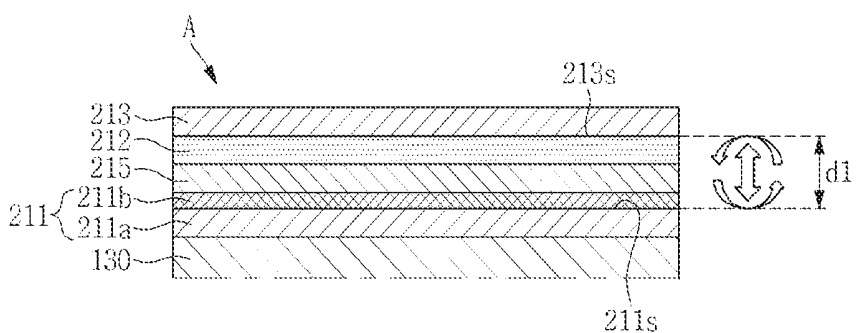


FIG.4

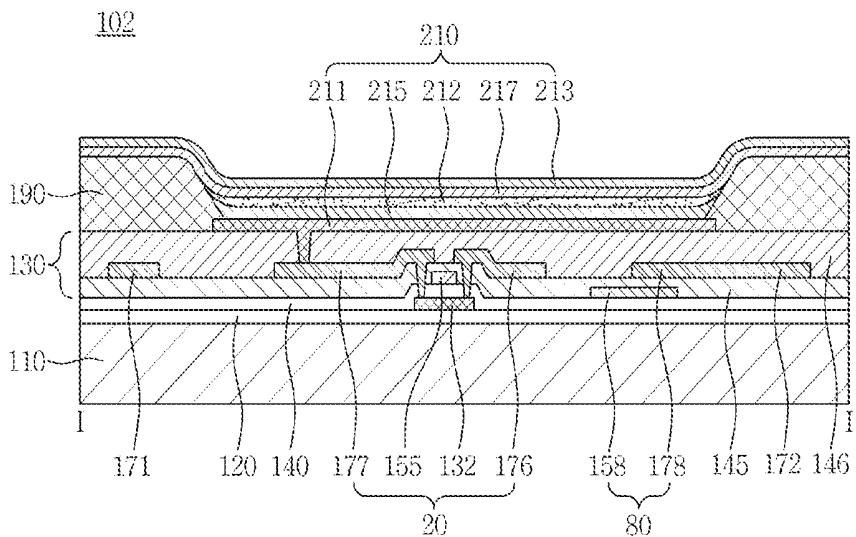


FIG. 5

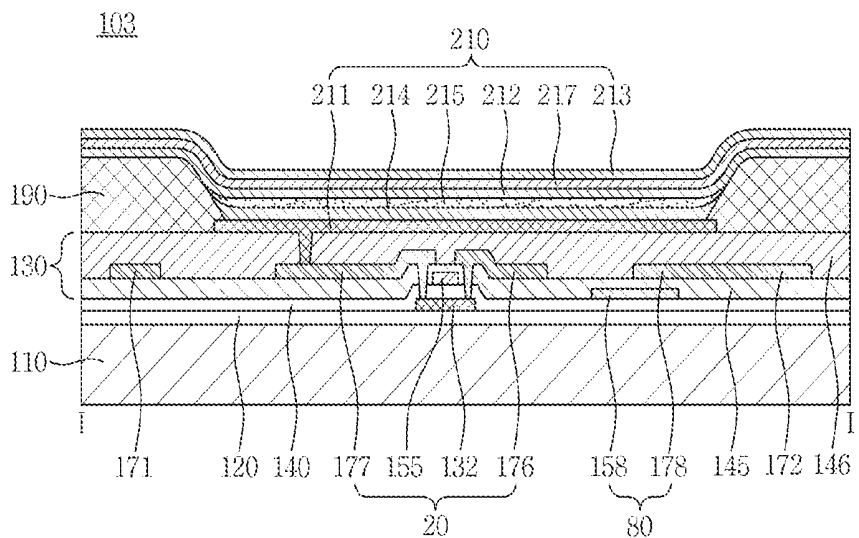


FIG. 6

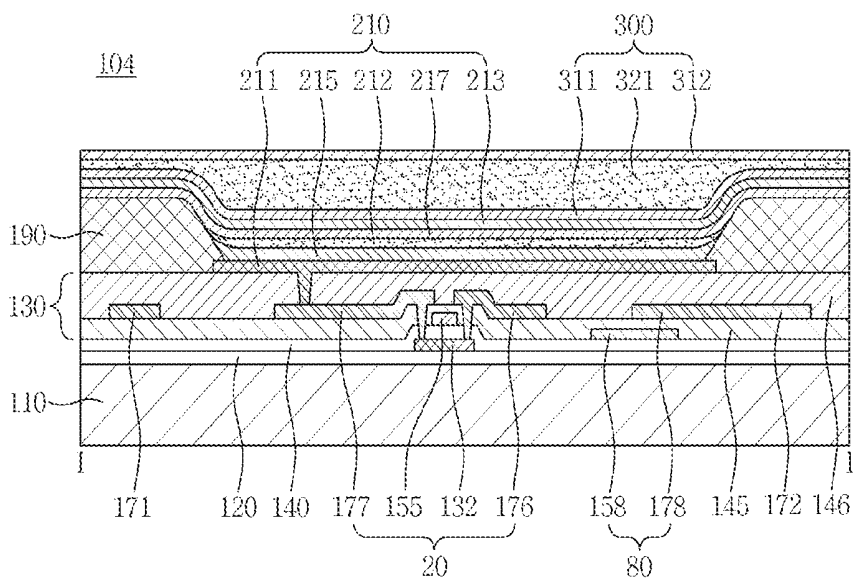


FIG. 7

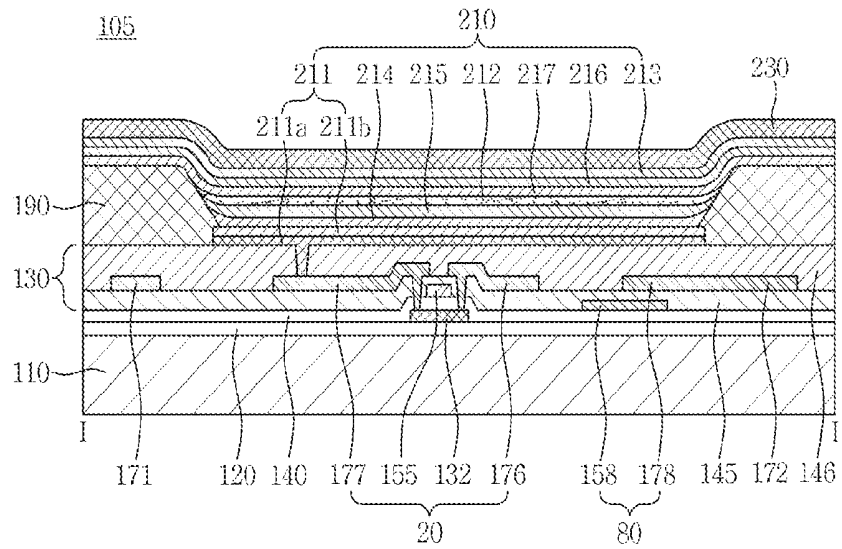


FIG. 8

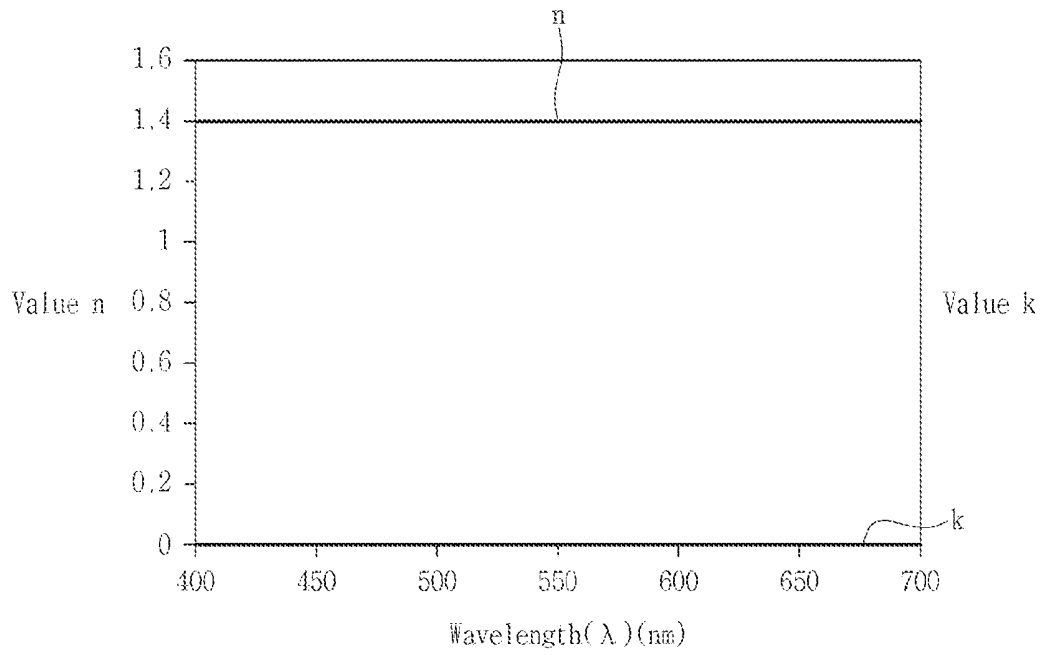


FIG.9A

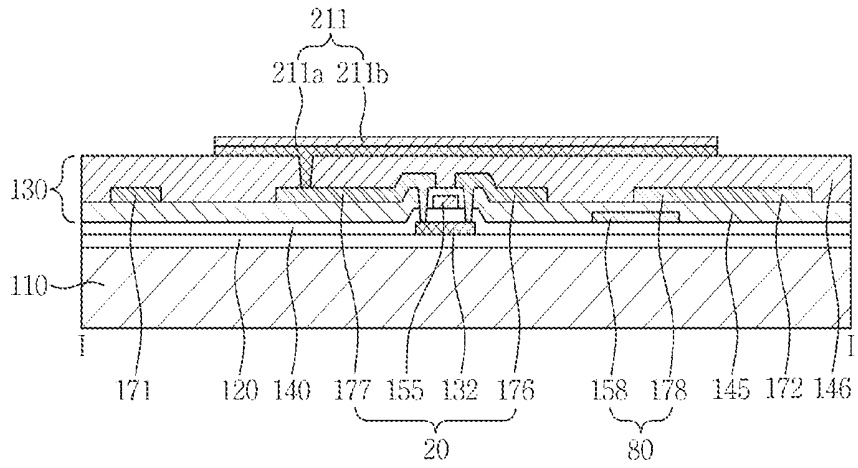


FIG.9B

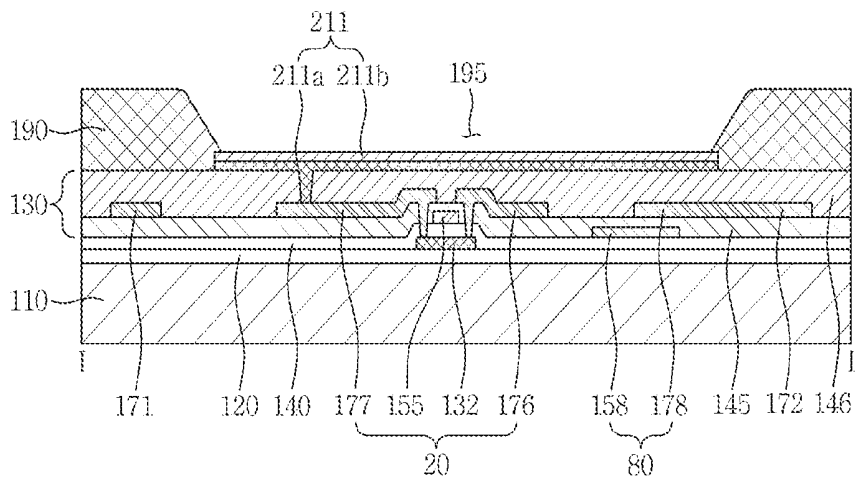


FIG.9C

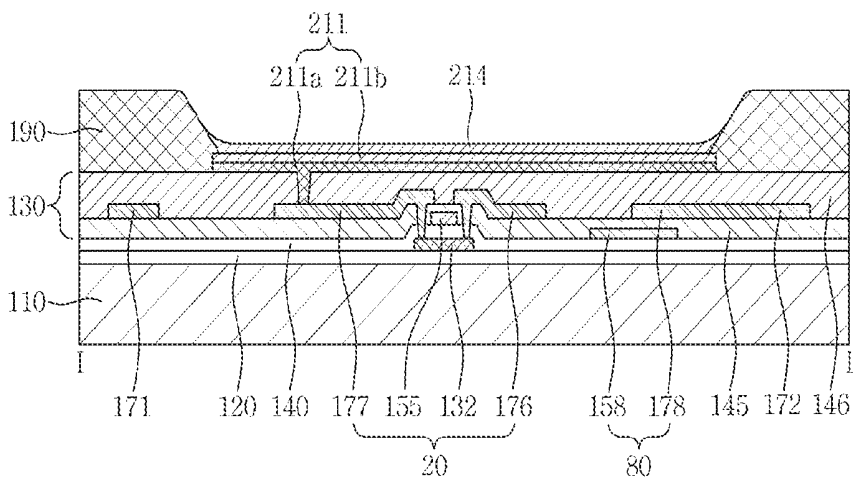


FIG.9D

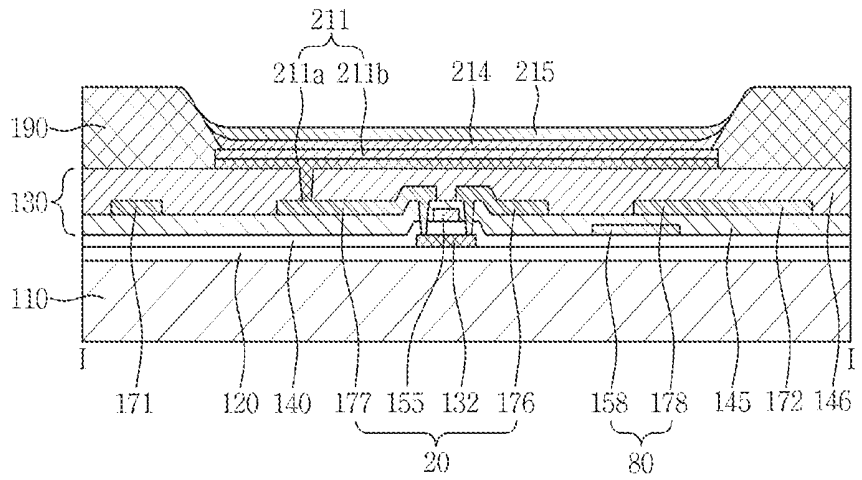


FIG.9E

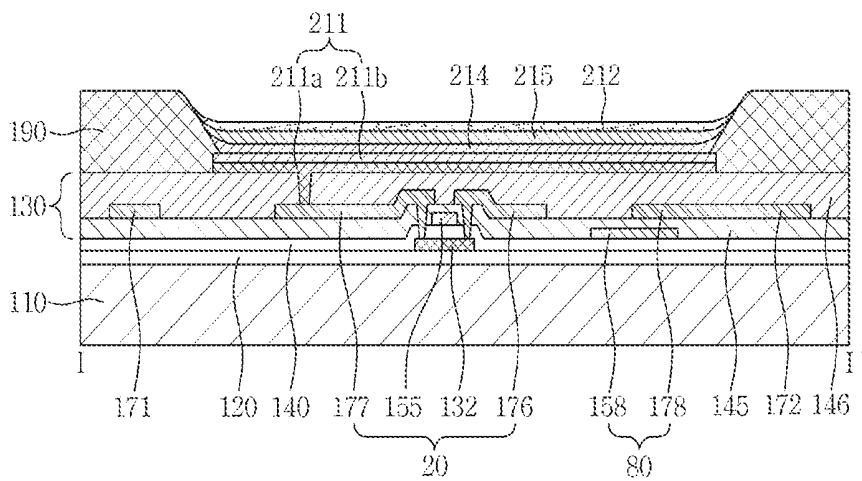


FIG.9F

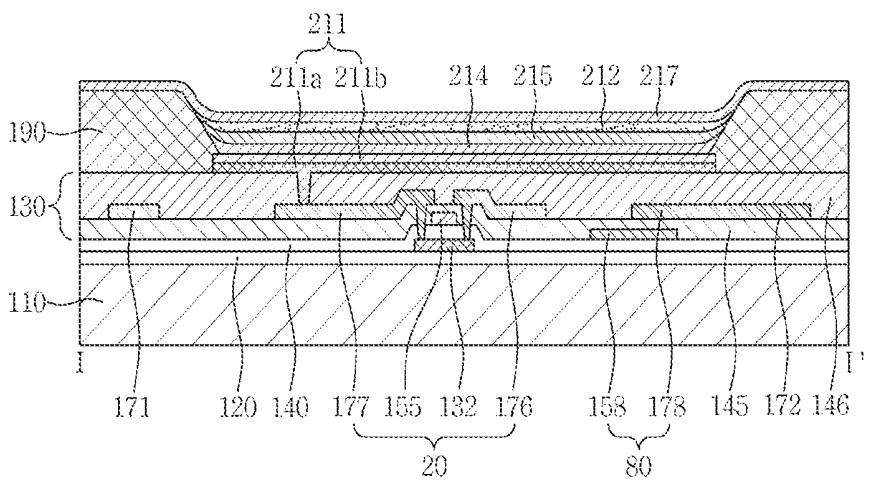


FIG.9G

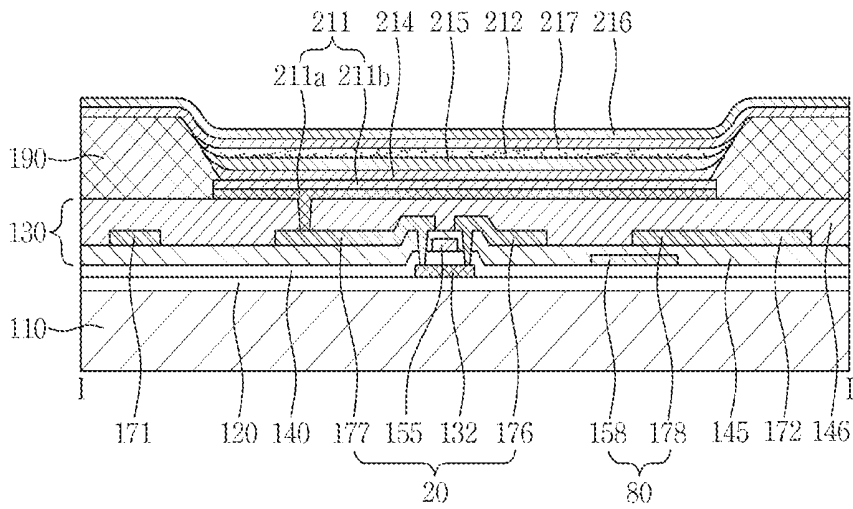


FIG.9H

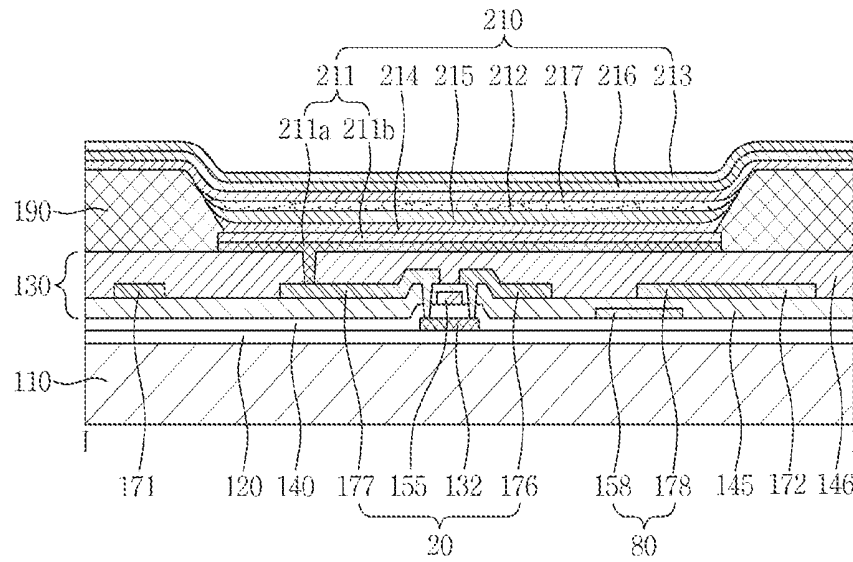
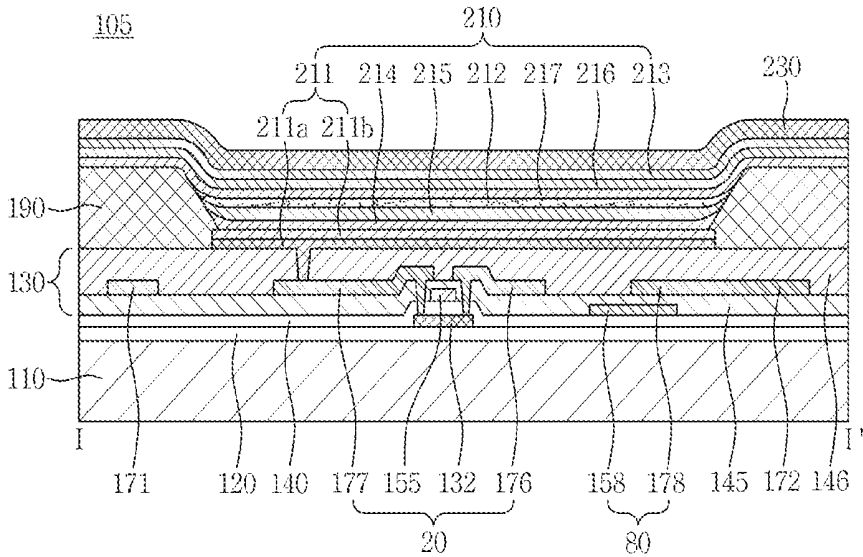


FIG. 9I



**ORGANIC LIGHT EMITTING DIODE  
DISPLAY DEVICE AND MANUFACTURING  
METHOD THEREOF**

CROSS-REFERENCE TO RELATED  
APPLICATION

[0001] This application claims priority under 35 U.S.C. § 119 to Korean Patent Application No. 10-2016-0132899, filed on Oct. 13, 2016, in the Korean Intellectual Property Office (KIPO), the disclosure of which is incorporated by reference herein in its entirety.

TECHNICAL FIELD

[0002] Embodiments relate to an organic light emitting diode ("OLED") display device and a method of manufacturing the OLED display device.

DISCUSSION OF RELATED ART

[0003] An OLED display device is a self-luminous display device that displays an image using an OLED that emits light. Such OLED display devices are currently garnering attention because they have high quality characteristics such as low power consumption, high luminance, and high reaction speed.

[0004] The OLED display devices have a multilayer structure including an OLED. Due to such a multilayer structure, a light emitted from the OLED is extinguished in the process of being emitted to the outside, resulting in a low luminous efficiency of the OLED display device. Accordingly, it is necessary to increase luminous efficiency of the OLED display device.

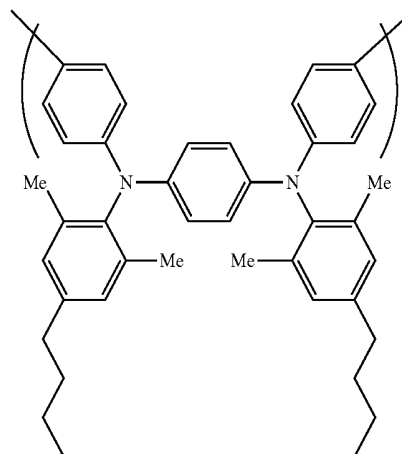
[0005] It is to be understood that this background of the technology section is intended to provide useful background for understanding the technology and as such disclosed herein, the technology background section may include ideas, concepts or recognitions that were not part of what was known or appreciated by those skilled in the pertinent art prior to a corresponding effective filing date of subject matter disclosed herein.

SUMMARY

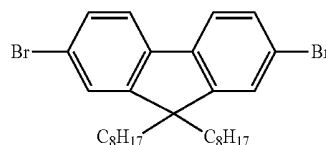
[0006] Exemplary embodiments may be directed to an OLED display device having excellent luminous efficiency and a long lifetime, and a method of manufacturing the OLED display device.

[0007] According to an exemplary embodiment, an organic light emitting diode display device includes: a substrate; a first electrode on the substrate; a hole transport layer on the first electrode; an organic light emitting layer on the hole transport layer; and a second electrode on the organic light emitting layer. The hole transport layer includes a hole transport layer composition including a compound represented by the following Chemical Formula 1, a compound represented by the following Chemical Formula 2, a compound represented by the following Chemical Formula 3, and a compound represented by the following Chemical Formula 4.

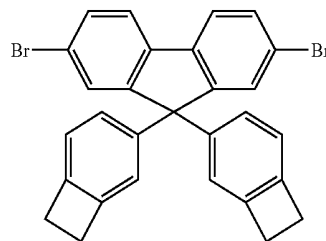
[Chemical Formula 1]



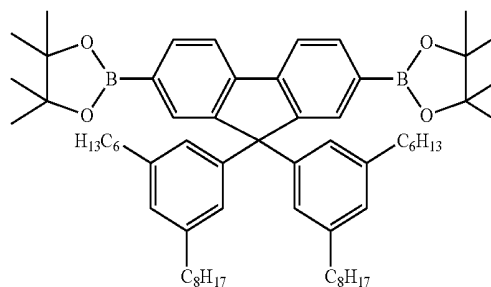
[Chemical Formula 2]



[Chemical Formula 3]



[Chemical Formula 4]



[0008] The hole transport layer may be formed by coating and curing the hole transport layer composition.

[0009] The hole transport layer composition may include the compound represented by Chemical Formula 1 in an amount ranging from about 25 percent by weight (wt %) to about 35 wt %, the compound represented by Chemical Formula 2 in an amount ranging from about 10 wt % to about 15 wt %, the compound represented by Chemical Formula 3 in an amount ranging from about 5 wt % to about 10 wt %, and the compound represented by Chemical Formula 4 in an amount ranging from about 40 wt % to about 60 wt %.

[0010] The hole transport layer may have a refractive index of about 1.6 or less.

[0011] The hole transport layer may have a thickness ranging from about 5 nm to about 10 nm.

[0012] The hole transport layer may have a thickness ranging from about 100 nm to about 110 nm.

[0013] The organic light emitting layer may be formed by depositing an organic light emitting material.

[0014] The organic light emitting diode display device may further include a hole injection layer between the first electrode and the hole transport layer.

[0015] The hole injection layer may be formed by coating and curing a solution including a hole injecting material.

[0016] The hole injection layer may have a refractive index of about 1.6 or less.

[0017] The organic light emitting diode display device may further include an electron transport layer between the organic light emitting layer and the second electrode.

[0018] The first electrode may include a reflective layer and a light transmissive conductive layer on the reflective layer, and the following Equation 2 may be satisfied when an optical distance between a surface of the reflective layer opposing the second electrode and a surface of the second electrode opposing the reflective layer is  $L1$  and a peak wavelength of a light generated in the organic emitting layer is  $\lambda 1$ ,

$$L1 = [(2m+1)/4] \times \lambda 1, \quad [\text{Equation 2}]$$

[0019] wherein  $m$  is an integer greater than or equal to zero.

[0020] According to another exemplary embodiment, a method of manufacturing an organic light emitting diode display device includes: forming a first electrode on a substrate; coating and curing a hole transport layer composition to form a hole transport layer on the first electrode; depositing an organic light emitting material to form an organic light emitting layer on the hole transport layer; and forming a second electrode on the organic light emitting layer. The hole transport layer composition includes a compound represented by Chemical Formula 1, a compound represented by Chemical Formula 2, a compound represented by Chemical Formula 3, and a compound represented by Chemical Formula 4.

[0021] The hole transport layer composition may include the compound represented by Chemical Formula 1 in an amount ranging from about 25 wt % to about 35 wt %, the compound represented by Chemical Formula 2 in an amount ranging from about 10 wt % to about 15 wt %, the compound represented by Chemical Formula 3 in an amount ranging from about 5 wt % to about 10 wt %, and the compound represented by Chemical Formula 4 in an amount ranging from about 40 wt % to about 60 wt %.

[0022] The method may further include, after forming the first electrode and before forming the hole transport layer, forming a hole injection layer on the first electrode, using a solution including a hole injecting material.

[0023] The foregoing is illustrative only and is not intended to be in any way limiting. In addition to the illustrative aspects, exemplary embodiments, and features described above, further aspects, exemplary embodiments, and features will become apparent by reference to the drawings and the following detailed description.

#### BRIEF DESCRIPTION OF THE DRAWINGS

[0024] A more complete appreciation of the inventive concept will become more apparent by describing in detail exemplary embodiments thereof with reference to the accompanying drawings, wherein:

[0025] FIG. 1 is a plan view illustrating an OLED display device according to an exemplary embodiment,

[0026] FIG. 2 is a cross-sectional view taken along line I-I' of FIG. 1;

[0027] FIG. 3 is an enlarged view illustrating a portion A of FIG. 2;

[0028] FIG. 4 is a cross-sectional view illustrating an OLED display device according to an alternative exemplary embodiment;

[0029] FIG. 5 is a cross-sectional view illustrating an OLED display device according to another alternative exemplary embodiment;

[0030] FIG. 6 is a cross-sectional view illustrating an OLED display device according to still another alternative exemplary embodiment;

[0031] FIG. 7 is a cross-sectional view illustrating an OLED display device according to yet another alternative exemplary embodiment;

[0032] FIG. 8 is a graph illustrating a refractive index and an extinction coefficient of a hole transport layer; and

[0033] FIGS. 9A, 9B, 9C, 9D, 9E, 9F, 9G, 9H and 9I are cross-sectional views illustrating a process of manufacturing the OLED display device according to yet another alternative exemplary embodiment.

#### DETAILED DESCRIPTION

[0034] Exemplary embodiments will now be described more fully hereinafter with reference to the accompanying drawings. Although the inventive concept may be modified in various manners and have several exemplary embodiments, exemplary embodiments are illustrated in the accompanying drawings and will be mainly described in the specification. However, the scope of the inventive concept is not limited to the exemplary embodiments and should be construed as including all the changes, equivalents, and substitutions included in the spirit and scope of the inventive concept.

[0035] In the drawings, thicknesses of a plurality of layers and areas are illustrated in an enlarged manner for clarity and ease of description thereof. When a layer, area, or plate is referred to as being "on" another layer, area, or plate, it may be directly on the other layer, area, or plate, or intervening layers, areas, or plates may be present therebetween. Conversely, when a layer, area, or plate is referred to as being "directly on" another layer, area, or plate, intervening layers, areas, or plates may be absent therebetween. Further when a layer, area, or plate is referred to as being "below" another layer, area, or plate, it may be directly below the other layer, area, or plate, or intervening layers, areas, or plates may be present therebetween. Conversely, when a layer, area, or plate is referred to as being "directly below" another layer, area, or plate, intervening layers, areas, or plates may be absent therebetween.

[0036] The spatially relative terms "below", "beneath", "lower", "above", "upper", and the like, may be used herein for ease of description to describe the relations between one element or component and another element or component as illustrated in the drawings. It will be understood that the spatially relative terms are intended to encompass different orientations of the device in use or operation, in addition to the orientation depicted in the drawings. For example, in the case where a device illustrated in the drawing is turned over, the device positioned "below" or "beneath" another device may be placed "above" another device. Accordingly, the

illustrative term “below” may include both the lower and upper positions. The device may also be oriented in the other direction, and thus the spatially relative terms may be interpreted differently depending on the orientations.

[0037] Throughout the specification, when an element is referred to as being “connected” to another element, the element is “directly connected” to the other element, or “electrically connected” to the other element with one or more intervening elements interposed therebetween. It will be further understood that the terms “comprises,” “comprising,” “includes” and/or “including,” when used in this specification, specify the presence of stated features, integers, steps, operations, elements, and/or components, but do not preclude the presence or addition of one or more other features, integers, steps, operations, elements, components, and/or groups thereof.

[0038] It will be understood that, although the terms “first,” “second,” “third,” and the like may be used herein to describe various elements, these elements should not be limited by these terms. These terms are only used to distinguish one element from another element. Thus, “a first element” discussed below could be termed “a second element” or “a third element,” and “a second element” and “a third element” may be termed likewise without departing from the teachings herein.

[0039] “About” or “approximately” as used herein is inclusive of the stated value and means within an acceptable range of deviation for the particular value as determined by one of ordinary skill in the art, considering the measurement in question and the error associated with measurement of the particular quantity (i.e., the limitations of the measurement system). For example, “about” may mean within one or more standard deviations, or within  $\pm 30\%$ ,  $20\%$ ,  $10\%$ ,  $5\%$  of the stated value.

[0040] Unless otherwise defined, all terms used herein (including technical and scientific terms) have the same meaning as commonly understood by those skilled in the art to which this disclosure pertains. It will be further understood that terms, such as those defined in commonly used dictionaries, should be interpreted as having a meaning that is consistent with their meaning in the context of the relevant art and will not be interpreted in an ideal or excessively formal sense unless clearly defined in the present specification.

[0041] Some of the parts which are not associated with the description may not be provided in order to specifically describe exemplary embodiments, and like reference numerals refer to like elements throughout the specification.

[0042] Hereinafter, an exemplary embodiment will be described with reference to FIGS. 1, 2 and 3.

[0043] FIG. 1 is a plan view illustrating an OLED display device 101 according to an exemplary embodiment, FIG. 2 is a cross-sectional view taken along line I-I' of FIG. 1, and FIG. 3 is an enlarged view illustrating a portion A of FIG. 2.

[0044] Referring to FIGS. 1 and 2, the OLED display device 101 according to an exemplary embodiment includes a substrate 110, a wiring unit 130, and an OLED 210.

[0045] The substrate 110 may include an insulating material selected from the group consisting of; glass, quartz, ceramic, plastic, or the like. However, exemplary embodiments are not limited thereto, and the substrate 110 may include a metallic material such as stainless steel.

[0046] A buffer layer 120 is disposed on the substrate 110. The buffer layer 120 may include one or more layers

selected from various inorganic layers and organic layers. The buffer layer 120 serves to substantially prevent permeation of undesirable elements, e.g., impurity elements or moisture, into the wiring unit 130 or the OLED 210, and to planarize a surface therebelow. However, the buffer layer 120 is not invariably necessary and may be omitted.

[0047] The wiring unit 130 is disposed on the buffer layer 120. The wiring unit 130 is a part including a switching thin film transistor (“TFT”) 10, a driving TFT 20 and a capacitor 80, and drives the OLED 210. The OLED 210 emits light according to a driving signal received from the wiring unit 130 to display an image.

[0048] FIGS. 1 and 2 illustrate an active matrix-type organic light emitting diode (AMOLED) display device 101 having a 2Tr-1Cap structure. For example, the 2Tr-1Cap structure may include two TFTs, e.g., the switching TFT 10 and the driving TFT 20, and one capacitor 80 in each pixel, but exemplary embodiments are not limited thereto. For example, the OLED display device 101 may include three or more TFTs and two or more capacitors in each pixel, and may further include additional wirings. Herein, the term “pixel” refers to a smallest unit for displaying an image, and the OLED display device 101 displays an image using a plurality of pixels.

[0049] Each pixel includes the switching TFT 10, the driving TFT 20, the capacitor 80, and the OLED 210 in addition, a gate line 151 extending along one direction, and a data line 171 and a common power line 172 insulated from and intersecting the gate line 151 are also included in the wiring unit 130. Each pixel may be defined by the gate line 151, the data line 171 and the common power line 172 as a boundary, but exemplary embodiments are not limited thereto. The pixels may be defined by a pixel defining layer 190.

[0050] The capacitor 80 includes a pair of capacitor plates 158 and 178, having an insulating interlayer 145 interposed therebetween. In such an exemplary embodiment, the insulating interlayer 145 may be a dielectric element. A capacitance of the capacitor 80 is determined by electric charges accumulated in the capacitor 80 and a voltage across the pair of capacitor plates 158 and 178.

[0051] The switching TFT 10 includes a switching semiconductor layer 131, a switching gate electrode 152, a switching source electrode 173 and a switching drain electrode 174. The driving TFT 20 includes a driving semiconductor layer 132, a driving gate electrode 155, a driving source electrode 176 and a driving drain electrode 177. A gate insulating layer 140 is further provided to insulate the semiconductor layers 131 and 132 and the gate electrodes 152 and 155.

[0052] The switching TFT 10 may function as a switching element which selects a pixel to perform light emission. The switching gate electrode 152 is connected to the gate line 151, and the switching source electrode 173 is connected to the data line 171. Spaced apart from the switching source electrode 173, the switching drain electrode 174 is connected to one of the capacitor plates, e.g., the capacitor plate 158.

[0053] The driving TFT 20 applies a driving power, which allows an organic light emitting layer 212 of the OLED 210 in a selected pixel to emit light, to a first electrode 211. The driving gate electrode 155 is connected to the capacitor plate 158 that is connected to the switching drain electrode 174. Each of the driving source electrode 176 and the other of the

capacitor plates, e.g., the capacitor plate **178**, is connected to the common power line **172**. The driving drain electrode **177** is connected to the first electrode **211** of the OLED **210** through a contact hole.

**[0054]** The switching TFT **10** is driven based on a gate voltage applied to the gate line **151** and serves to transmit a data voltage applied to the data line **171** to the driving TFT **20**. A voltage equivalent to a difference between a common voltage applied to the driving TFT **20** from the common power line **172** and the data voltage transmitted by (or from) the switching TFT **10** is stored in the capacitor **80**, and a current corresponding to the voltage stored in the capacitor **80** flows to the OLED **210** through the driving TFT **20** such that the OLED **210** may emit light.

**[0055]** A planarization layer **146** is disposed on the insulating interlayer **145**. The planarization layer **146** includes an insulating material, and protects the wiring unit **130**.

**[0056]** The OLED **210** is disposed on the planarization layer **146**. The OLED **210** includes the first electrode **211**, a hole transport layer **215** on the first electrode **211**, the organic light emitting layer **212** on the hole transport layer **215**, and a second electrode **213** on the organic light emitting layer **212**. Holes and electrons are injected into the organic light emitting layer **212** from the first electrode **211** and the second electrode **213**, respectively, and combined therein to form an exciton. Light is emitted when the exciton falls from an excited state to a ground state.

**[0057]** In an exemplary embodiment, the first electrode **211** is an anode for injecting holes, and the second electrode **213** is a cathode for injecting electrons.

**[0058]** According to an exemplary embodiment, the first electrode **211** includes a reflective layer **211a** and the second electrode **213** includes a semi-transmissive layer (see FIG. 3). Accordingly, a light generated in the organic light emitting layer **212** is emitted through the second electrode **213**. That is, the OLED display device **101** according to an exemplary embodiment has a top emission type structure.

**[0059]** Referring to FIG. 3, the first electrode **211** may have a structure in which, for example, the reflective layer **211a** and a light transmissive conductive layer **211b** are stacked. In such an exemplary embodiment, the light transmissive conductive layer **211b** of the first electrode **211** is disposed between the reflective layer **211a** and the hole transport layer **215** (see FIGS. 3, 7 and 9A).

**[0060]** The reflective layer **211a** may include one or more metals selected from: magnesium (Mg), silver (Ag), gold (Au), calcium (Ca), lithium (Li), chromium (Cr), copper (Cu) and aluminum (Al). The reflective layer **211a** may have a thickness of about 100 nm or more.

**[0061]** The light transmissive conductive layer **211b** may include a transparent conductive oxide (TCO). Examples of the TCO may include: indium tin oxide (ITO), indium zinc oxide (IZO), zinc oxide (ZnO), aluminum zinc oxide (AZO) or indium oxide (In<sub>2</sub>O<sub>3</sub>). Since such a light transmissive conductive layer **211b** has a high work function, hole injection through the first electrode **211** is smooth.

**[0062]** In addition, the first electrode **211** may have a triple-layer structure in which a light transmissive conductive layer, a reflective layer and a light transmissive conductive layer are sequentially stacked.

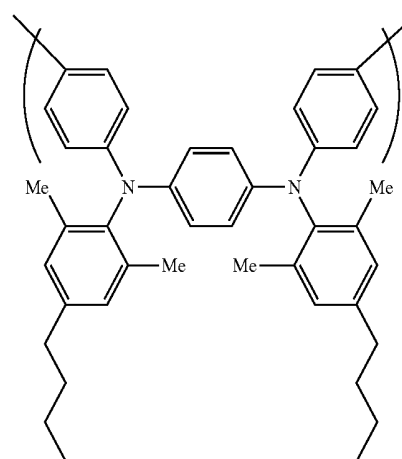
**[0063]** The pixel defining layer **190** serves to separate the plurality of first electrodes **211** from each other. The pixel defining layer **190** has an opening **195** (see FIG. 9B). The opening **195** of the pixel defining layer **190** extends to and

exposes a portion of the first electrode **211**. The hole transport layer **215**, the organic light emitting layer **212** and the second electrode **213** are sequentially stacked on a portion of the first electrode **211** exposed by the opening **195**.

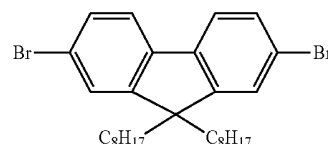
**[0064]** Referring to FIG. 2, the hole transport layer **215** is disposed on the first electrode **211**. However, exemplary embodiments are not limited thereto, and the hole transport layer **215** may be disposed on the pixel defining layer **190** as well as on the first electrode **211**.

**[0065]** According to an exemplary embodiment, the hole transport layer **215** may be formed using a compound represented by the following Chemical Formula 1, a compound represented by the following Chemical Formula 2, a compound represented by the following Chemical Formula 3, and a compound represented by the following Chemical Formula 4.

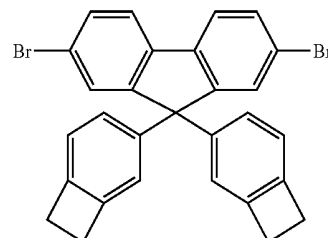
[Chemical Formula 1]



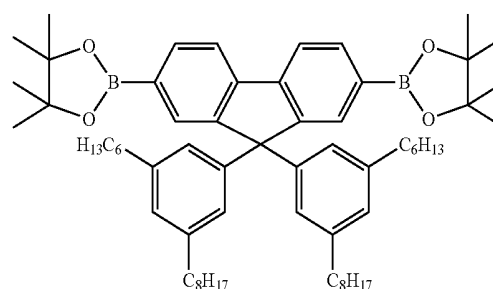
[Chemical Formula 2]



[Chemical Formula 3]



[Chemical Formula 4]



[0066] That is, the hole transport layer 215 may include the compound represented by Chemical Formula 1, the compound represented by Chemical Formula 2, the compound represented by Chemical Formula 3, and the compound represented by Chemical Formula 4. For example, the hole transport layer 215 may be formed by coating and curing a composition forming a hole transport layer, sometimes called a hole transport layer composition, including the compound represented by Chemical Formula 1, the compound represented by Chemical Formula 2, the compound represented by Chemical Formula 3, and the compound represented by Chemical Formula 4.

[0067] The composition forming a hole transport layer may include the compound represented by Chemical Formula 1 in an amount ranging from about 25 percent by weight (wt %) to about 35 wt %, the compound represented by Chemical Formula 2 in an amount ranging from about 10 wt % to about 15 wt %, the compound represented by Chemical Formula 3 in an amount ranging from about 5 wt % to about 10 wt %, and the compound represented by Chemical Formula 4 in an amount ranging from about 40 wt % to about 60 wt %.

[0068] The composition forming the hole transport layer may be in a solution state. method of forming a layer using a solution is referred to as “a solution method” or “a wet method.” According to an exemplary embodiment, the hole transport layer 215 may be formed by the solution method.

[0069] Since the composition forming a hole transport layer is in a solution state, one surface of the hole transport layer 215 contacting the organic light emitting layer 212 may become flat even though particles or impurities exist below the hole transport layer 215. Accordingly, luminous efficiency of the organic light emitting layer 212 may be improved and the lifetime may increase.

[0070] For example, in the case where a patterning residue generated in the process of forming the first electrode 211 is attached to a surface of the first electrode 211, or a residue or particles generated in the process of forming another layer remains above the first electrode 211, surface unevenness and layer damage may be caused. The surface unevenness may cause defective light emission in the organic light emitting layer 212, and the lifetime of the OLED 210 may be shortened.

[0071] However, according to an exemplary embodiment, since the hole transport layer 215 is formed by the solution method, even though a lower surface of the hole transport layer 215 is uneven, an upper surface of the hole transport layer 215 contacting the organic light emitting layer 212 may become planarized. Accordingly, defective light emission may be substantially prevented in the organic light emitting layer 212, and the lifetime of the OLED 210 may be prolonged.

[0072] The organic light emitting layer 212 is disposed on the hole transport layer 215. The organic light emitting layer 212 overlaps the first electrode 211.

[0073] The organic light emitting layer 212 may include a unimolecular organic material or a polymer organic material. According to an exemplary embodiment, the organic light emitting layer 212 may include a host and a luminescent dopant. The host and the luminescent dopant constituting the organic light emitting layer 212 are referred to as an organic light emitting material.

[0074] The organic light emitting layer 212 may be formed by depositing the organic light emitting material. For example, the organic light emitting layer 212 may be formed by deposition of a host and a luminescent dopant.

[0075] The second electrode 213 is disposed on the organic light emitting layer 212. Referring to FIG. 2, the second electrode 213 is disposed on the pixel defining layer 190 as well as on the organic light emitting layer 212.

[0076] The second electrode 213 may include a semi-transmissive layer including one or more metals selected from the group consisting of magnesium (Mg), silver (Ag), gold (Au), calcium (Ca), lithium (Li), chromium (Cr), copper (Cu) and aluminum (Al). In general, the semi-transmissive layer may have a thickness less than about 200 nm. As the thickness of the semi-transmissive layer becomes thinner, the transmittance of light becomes higher, and as the thickness thereof becomes thicker, the transmittance of light becomes lower.

[0077] According to an exemplary embodiment, the second electrode 213 includes magnesium (Mg) and silver (Ag), and the content of silver (Ag) is larger than the content of magnesium (Mg).

[0078] Hereinafter, resonance of the OLED display device 101 will be described with reference to FIG. 3.

[0079] Referring to FIG. 3, the first electrode 211 includes the reflective layer 211a and the light transmissive conductive layer 211b on the reflective layer 211a.

[0080] The OLED display device 101 has a multi-layered structure, and a light generated in the organic light emitting layer 212 is emitted through the multi-layered structure.

[0081] When light repeats reflection between two reflective surfaces, optical resonance may occur. When optical resonance occurs, light energy increases and the light having the increased energy may relatively easily pass through the multilayer stack structure to be emitted outwards. Such a structure allowing light resonance between two reflective layers is referred to as a resonance structure and a distance between the two reflective layers between which resonance occurs is referred to as a resonance distance. The resonance distance varies based on the wavelength of light.

[0082] According to exemplary embodiment, an upper surface 211s of the reflective layer 211a and a lower surface 213s of the second electrode 213 that oppose each other with the organic light emitting layer 212 therebetween may become reflective surfaces.

[0083] When a peak wavelength of a light emitted from the organic light emitting layer 212 is denoted as “ $\lambda_1$ ,” an optical distance between the upper surface 211s of the reflective layer 211a and the lower surface 213s of the second electrode 213 is denoted as “L1,” and a phase shift generated when a light generated in the organic light emitting layer 212 is reflected between the upper surface 211s of the reflective layer 211a and the lower surface 213s of the second electrode 213 is denoted as “ $\Phi$  radian,” the optical distance L1 may be set to be a positive minimum value in a range satisfying the following Equation 1.

$$(2L1)/\lambda_1 + \Phi/(2\pi) = m \quad (m \text{ being an integer}) \quad [\text{Equation 1}]$$

[0084] In addition, when a peak wavelength of a light emitted from the organic light emitting layer 212 is denoted as “ $\lambda_1$ ” and an optical distance between the upper surface 211s of the reflective layer 211a and the lower surface 213s of the second electrode 213 is denoted as “L1,” the optical distance L1 may be adjusted to satisfy the following Equation 2 for resonance.

$$L1 = [(2m+1)/4] \times \lambda_1, \quad [\text{Equation 2}]$$

[0085] In Equation 2, m is an integer of 0 or more.

[0086] In addition, the optical distance L1 may be obtained by the following equation 3.

$$L1 = d1 \times n1 \quad [\text{Equation 3}]$$

[0087] In Equation 3, “d1” designates a distance between the upper surface 211s of the reflective layer 211a and the lower surface 213s of the second electrode 213, and “n1” designates an average refractive index between the upper

surface **211s** of the reflective layer **211a** and the lower surface **213s** of the second electrode **213**.

[0088] In the case where the hole transport layer **215** has a relatively low refractive index, the resonance distance may be ensured even though the hole transport layer **215** has a large thickness. According to an exemplary embodiment, the hole transport layer **215** may have a refractive index of about 1.6 or less. The hole transport layer **215** may have a low refractive index ranging from about 1.4 to about 1.6, for example. Accordingly, the hole transport layer **215** may have a relatively large thickness.

[0089] In the case where the thickness of the hole transport layer **215** is large, the surface smoothness of the hole transport layer **215** may be improved. Accordingly, the luminous efficiency of the organic light emitting layer **212** may be improved.

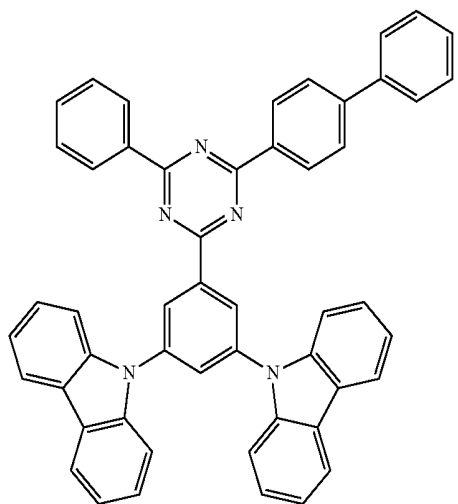
[0090] For example, the hole transport layer **215** may have a thickness ranging from about 5 nm to about 10 nm. In addition, the hole transport layer **215** may have a thickness ranging from about 100 nm to about 110 nm. In the case where the hole transport layer **215** has a thickness ranging from about 5 nm to about 10 nm, a primary resonance of the light generated in the organic light emitting layer **212** may be induced. In the case where the hole transport layer **215** has a thickness ranging from about 100 nm to about 110 nm, a secondary resonance of the light generated in the organic light emitting layer **212** may be induced.

[0091] FIG. 4 is a cross-sectional view illustrating an OLED display device **102** according to an alternative exemplary embodiment. Hereinafter, in order to avoid redundancy, descriptions of the components already described will be omitted.

[0092] The OLED display device **102** according to an alternative exemplary embodiment includes an electron transport layer (ETL) **217** between an organic light emitting layer **212** and a second electrode **213**.

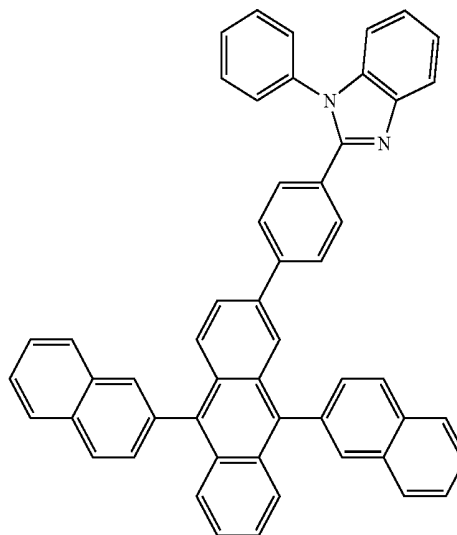
[0093] The electron transport layer **217** may be formed by deposition of at least one of a compound represented by the following Chemical Formula 5 and a compound represented by the following Chemical Formula 6.

[Chemical Formula 5]



-continued

[Chemical Formula 6]



[0094] Although not illustrated in FIG. 4, an electron injection layer (EIL) may be disposed on the electron transport layer **217**.

[0095] FIG. 5 is a cross-sectional view illustrating an OLED display device **103** according to another alternative exemplary embodiment.

[0096] The OLED display device **103** according to another alternative exemplary embodiment includes a hole injection layer (HIL) **214** between a first electrode **211** and a hole transport layer **215**.

[0097] The hole injection layer **214** may be formed by the solution method, similar to the hole transport layer **215**. For example, a PEDOT/PSS solution may be coated on the first electrode **211** and then cured to form the hole injection layer **214**. Such a hole injection layer **214** may have a refractive index of about 1.5 and a thickness of about 12 nm.

[0098] Referring to FIG. 5, the hole injection layer **214** is disposed on the first electrode **211**. However, exemplary embodiments are not limited thereto, and the hole injection layer **214** may be disposed on the pixel defining layer **190** as well as on the first electrode **211**.

[0099] FIG. 6 is a cross-sectional view illustrating an OLED display device **104** according to still another alternative exemplary embodiment.

[0100] Referring to FIG. 6, a thin film encapsulation layer **300** is disposed on a second electrode **213**. The thin film encapsulation layer **300** substantially prevents outside air such as moisture or oxygen from penetrating into an OLED **210**.

[0101] The thin film encapsulation layer **300** includes at least one inorganic layer **311** and **312** and at least one organic layer **321** that are alternately disposed.

[0102] The thin film encapsulation layer **300** illustrated in FIG. 6 includes two inorganic layers **311** and **312** and one organic layer **321**. However, the structure of the thin film encapsulation layer **300** is not limited to the structure illustrated in FIG. 6.

[0103] The inorganic layers **311** and **312** may include at least one selected from the group consisting of: metal oxide, metal oxynitride, silicon oxide, silicon nitride, and silicon oxynitride.

[0104] The inorganic layers 311 and 312 may be formed through methods such as a chemical vapor deposition (CVD) method or an atomic layer deposition (ALD) method. However, exemplary embodiments are not limited thereto and the inorganic layers 311 and 312 may be formed through various methods known to those skilled in the art.

[0105] The organic layer 321 may include, for example, a polymer-based material.

[0106] The organic layer 321 may be formed through a thermal deposition process. The thermal deposition process for forming the organic layer 321 may be performed in a temperature range that may not damage the OLED 210. However, exemplary embodiments are not limited thereto and the organic layer 321 may be formed through various methods known to those skilled in the pertinent art.

[0107] The inorganic layers 311 and 312 which have a high density of a thin layer may substantially prevent or efficiently reduce infiltration of, mostly, moisture or oxygen. Permeation of moisture and oxygen into the OLED 210 may be largely prevented by the inorganic layers 311 and 312.

[0108] Moisture and oxygen that have passed through the inorganic layers 311 and 312 may further be blocked by the organic layer 321. The organic layer 321 may also serve as a buffer layer to reduce stress between respective ones of the inorganic layers 311 and 312 therebetween, in addition to the moisture permeation preventing function. Further, since the organic layer 321 has planarization characteristics, an uppermost surface of the thin film encapsulation layer 300 may be planarized by the organic layer 321.

[0109] The thin film encapsulation layer 300 may have a thickness of about 50  $\mu\text{m}$  or less, e.g., about 10  $\mu\text{m}$  or less where necessary. Accordingly, the OLED display device 104 may have a significantly small thickness. As such, the OLED display device 104 may have flexible characteristics.

[0110] However, exemplary embodiments are not limited thereto. In order to protect the OLED 210, an encapsulation substrate (not illustrated) may be disposed on the OLED 210, instead of the thin film encapsulation layer 300. The encapsulation substrate may include of a transparent insulating material such as glass, quartz, ceramic, and plastic. The encapsulation substrate is sealingly attached to the substrate 110 to protect the OLED 210.

[0111] In addition, a filler (not illustrated) may be disposed between the OLED 210 and the encapsulation substrate. The filler may include an organic material, for example, a polymer. In addition, a protective layer or an encapsulation layer including a metal or an inorganic material may be disposed on the OLED 210 to protect the OLED 210.

[0112] FIG. 7 is a cross-sectional view illustrating an OLED display device 105 according to yet another alternative exemplary embodiment.

[0113] A first electrode 211 of the OLED display device 105 illustrated in FIG. 7 includes a reflective layer 211a and a light transmissive conductive layer 211b. The reflective layer 211a may include one or more metals selected from: magnesium (Mg), silver (Ag), gold (Au), calcium (Ca), lithium (Li), chromium (Cr), copper (Cu) and aluminum (Al). The light transmissive conductive layer 211b may include a transparent conductive oxide (TCO). Examples of the TCO may include: indium tin oxide (ITO), indium zinc oxide (IZO), zinc oxide (ZnO), aluminum zinc oxide (AZO) or indium oxide ( $\text{In}_2\text{O}_3$ ).

[0114] The OLED display device 105 illustrated in FIG. 7 includes a hole injection layer (HIL) 214 between the first

electrode 211 and the hole transport layer 215. The hole injection layer 214 may be formed using a PEDOT/PSS solution.

[0115] In addition, the OLED display device 105 illustrated in FIG. 7 includes an electron transport layer (ETL) 217 on the organic light emitting layer 212 and an electron injection layer 216 on the electron transport layer 217.

[0116] The electron transport layer 217 may be formed by deposition of at least one of the compound represented by Chemical Formula 5 and the compound represented by Chemical Formula 6. The electron injection layer 216 may be formed by deposition of lithium quinolate (Liq).

[0117] In addition, referring to FIG. 7, a capping layer 230 is disposed on the second electrode 213. The capping layer 230 protects the OLED 210 and helps a light emitted from the organic light emitting layer 212 to be efficiently emitted to the outside. The capping layer 230 may include at least one of an inorganic material and an organic material having light transmittance.

[0118] FIG. 8 is a graph illustrating a refractive index and an extinction coefficient of the hole transport layer 215.

[0119] For example, FIG. 8 shows measurement results of a refractive index  $n$  and an extinction coefficient  $k$  of the hole transport layer 215 including a composition forming a hole transport layer that includes the compound represented by Chemical Formula 1, the compound represented by Chemical Formula 2, the compound represented by Chemical Formula 3, and the compound represented by Chemical Formula 4. In such a case, the refractive index was measured according to the wavelength of light.

[0120] Referring to FIG. 8, the hole transport layer 215 has a refractive index  $n$  of about 1.4 with respect to a light having a wavelength range of visible light, and has an extinction coefficient  $k$  of about 0.

[0121] Hereinafter, a method of manufacturing OLED display device 105 according to yet another alternative exemplary embodiment will be described with reference to FIGS. 9A, 9B, 9C, 9D, 9E, 9F, 9G, 9H and 9I.

[0122] For example, FIGS. 9A, 9B, 9C, 9D, 9E, 9F, 9G, 9H and 9I are cross-sectional views illustrating a process of manufacturing the OLED display device 105 according to yet another alternative exemplary embodiment.

[0123] Referring to FIG. 9A, a first electrode 211 is formed on a substrate 110. For example, a buffer layer 120 and a wiring unit 130 are formed on the substrate 110, and the first electrode 211 is formed thereon. The first electrode 211 is connected to a driving thin film transistor 20 disposed at the wiring unit 130.

[0124] The first electrode 211 includes a reflective layer 211a and a light transmissive conductive layer 211b.

[0125] Referring to FIG. 9B, a pixel defining layer 190 is formed on the substrate 110.

[0126] The pixel defining layer 190 serves to separate the plurality of first electrodes 211 from each other. The pixel defining layer 190 has an opening 195. The opening 195 of the pixel defining layer 190 exposes a portion of the first electrode 211.

[0127] Referring to FIG. 9C, a hole injection layer 214 is formed on the first electrode 211 and the pixel defining layer 190. The hole injection layer 214 may be disposed only on the first electrode 211.

[0128] The hole injection layer 214 may be formed using a PEDOT[Poly(3,4-ethylenedioxythiophene)]/PSS[Polystyrene sulfonate] solution. Examples of the PEDOT/PSS solu-

tion may include an aqueous solution (with a solvent including PEDOT in an amount of about 0.5 wt % and PSS in an amount of about 0.8 wt %).

[0129] The hole injection layer **214** may have a refractive index of about 1.5 and a thickness of about 12 nm.

[0130] Referring to FIG. 9D, a hole transport layer **215** is formed on the hole injection layer **214**.

[0131] A composition forming a hole transport layer may be coated on the hole injection layer **214** and cured to form the hole transport layer **215**.

[0132] The composition forming a hole transport layer includes the compound represented by Chemical Formula 1, the compound represented by Chemical Formula 2, the compound represented by Chemical Formula 3, and the compound represented by Chemical Formula 4. For example, the composition forming a hole transport layer may include the compound represented by Chemical Formula 1 in an amount ranging from about 25 wt % to about 35 wt %, the compound represented by Chemical Formula 2 in an amount ranging from about 10 wt %, to about 15 wt %, the compound represented by Chemical Formula 3 in an amount ranging from about 5 wt % to about 10 wt %, and the compound represented by Chemical Formula 4 in an amount ranging from about 40 wt % to about 60 wt %.

[0133] Referring to FIG. 9E, an organic light emitting layer **212** is formed on the hole transport layer **215**. The organic light emitting layer **212** overlaps the first electrode **211**.

[0134] The organic light emitting layer **212** is formed by deposition of an organic light emitting material. That is, the organic light emitting layer **2** is formed by deposition of a host and a luminescent dopant material.

[0135] Referring to FIG. 9F, an electron transport layer **217** is formed on the organic light emitting layer **212**.

[0136] The electron transport layer **217** may be formed by deposition of at least one of the compound represented by Chemical Formula 5 and the compound represented by Chemical Formula 6.

[0137] Referring to FIG. 9G, an electron injection layer **216** is formed on the electron transport layer **217**.

[0138] Lithium quinolate (Liq) may be deposited on the electron transport layer **217** to form the electron injection layer **216**.

[0139] Referring to FIG. 9H, a second electrode **213** is disposed on the electron injection layer **216**. An OLED **210** may be formed in the manner described hereinabove.

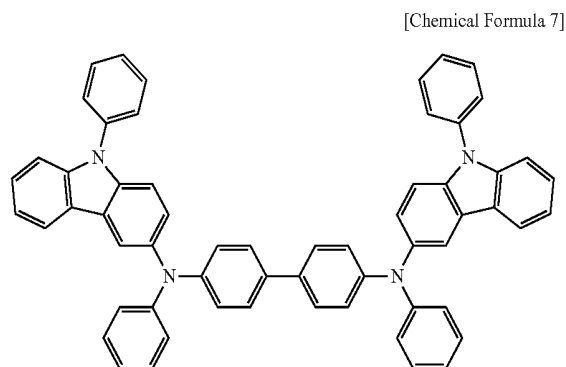
[0140] The second electrode **213** may be formed as a semi-transmissive layer and may have a thickness ranging from about 10 nm to about 20 nm.

[0141] Referring to FIG. 9I, a capping layer **230** is formed on the second electrode **213**.

[0142] The capping layer **230** protects the OLED **210** and helps a light generated in the organic light emitting layer **212** to be emitted efficiently to the outside.

[0143] The capping layer **230** may include at least one of an inorganic material or an organic material having light transmittance. The capping layer **230** may have a thickness ranging from about 30 nm to about 300 nm, and may have a thickness of about 300 nm or more. As the thickness of the capping layer **230** increases, it is more advantageous to protect the OLED **201**. However, if the capping layer **230** is thick, it is disadvantageous to slim down the OLED display device **105**.

[0144] The capping layer **230** may be formed through methods known in the art. The capping layer **230** may be formed by deposition. For example, the capping layer **230** may be formed by deposition of a compound represented by the following Chemical Formula 7, and may have a thickness of about 60 nm.



[0145] Hereinafter, test examples and comparative examples are described below.

#### TEST EXAMPLE 1

[0146] By sputtering and patterning, a first electrode **211** was formed on a substrate **110** that includes glass, the first electrode **211** including a silver (Ag) layer having a thickness of about 100 nm and an ITO layer having a thickness of about 20 nm that are sequentially stacked. The silver (Ag) layer having a thickness of about 100 nm is a reflective layer **211a**, and the ITO layer having a thickness of about 20 nm is a light transmissive conductive layer **211b**.

[0147] Next, the reflective layer **211a** and the light transmissive conductive layer **211b** were ultrasonically cleaned using isopropyl alcohol (IPA), cleaned and dried, and further ultrasonically cleaned and pre-treated (UV-O3 treatment, heat treatment). The first electrode **211** thus manufactured is an anode.

[0148] A hole injection layer **214** having a thickness of about 12 nm was formed on the first electrode **211** using a PEDOT/PSS solution. An aqueous solution (with a solvent H<sub>2</sub>O) including PEDOT in an amount of about 0.5 wt % and PSS in an amount of about 0.8 wt % was used as the PEDOT/PSS solution. A refractive index of the hole injection layer **214** is about 1.5.

[0149] A hole transport layer **215** having a thickness of about 5 nm was formed on the hole injection layer **214** using a composition forming a hole transport layer.

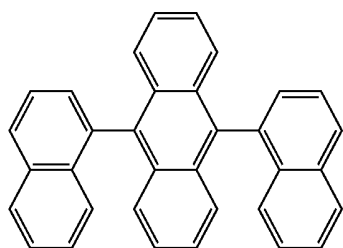
[0150] The composition forming the hole transport layer is a solution including the compound represented by Chemical Formula 1 in an amount of about 30 wt %, the compound represented by Chemical Formula 2 in an amount of about 12.5 wt %, the compound represented by Chemical Formula 3 in an amount of about 7.5 wt %, and the compound represented by Chemical Formula 4 in an amount of about 50 wt %. According to Test Example 1, the hole transport layer **215** was formed by a solution method.

[0151] An organic light emitting layer **212** was formed on the hole transport layer **215**. The organic light emitting layer **212** was formed by deposition of a host and a luminescent dopant material. An anthracene derivative compound repre-

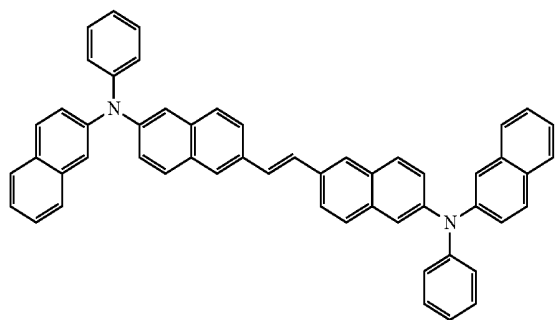
sented by the following Chemical Formula 8 was used as the host, and a compound represented by the following Chemical Formula 9 was used as the dopant material. The dopant material was used in an amount of about 5 percent by volume (vol %) with respect to the total volume of the deposition material.

[0152] According to Test Example 1, the organic light emitting layer **212** has a thickness of about 30 nm.

[Chemical Formula 8]



[Chemical Formula 9]



[0153] Next, the compound represented by the Chemical Formula 5 was deposited to a thickness of about 20 nm on the organic light emitting layer **212** to form an electron transport layer **217**.

[0154] Then, lithium quinolate (Liq) was deposited to a thickness of about 0.35 nm on the electron transport layer **217** to form an electron injection layer **216**.

[0155] Silver (Ag) and magnesium (Mg) were co-deposited (a volume ratio of about 80:20) on the electron injection layer **216** to form a second electrode **213**. The second electrode **213** of Test Example 1 has a thickness of about 13 nm.

[0156] The second electrode **213** is a semi-transmissive layer and is a cathode.

[0157] The compound represented by Chemical Formula 7 was deposited to a thickness of about 60 nm on the second electrode **213** to form a capping layer **230**.

[0158] When a current was applied at a current density of about 10 mA/cm<sup>2</sup> to the OLED sample (Test Example 1) prepared in a manner described hereinabove, a driving voltage (V) and a current efficiency (cd/A, luminous efficiency) evaluated. The results are shown in Table 1 below.

#### TEST EXAMPLE 2

[0159] An OLED sample is manufactured in a substantially same manner as in Test Example 1, except that a hole injecting layer **214** was formed to a thickness of about 70 nm, a hole transport layer **215** was formed to a thickness of

about 105 nm and an organic light emitting layer **212** was formed to a thickness of about 38 nm.

[0160] When a current was applied at a current density of about 10 mA/cm<sup>2</sup> to the OLED sample (Test Example 2) prepared in such a manner, a driving voltage (V) and a current efficiency (cd/A, luminous efficiency) were evaluated. The results are shown in Table 1 below.

#### TEST EXAMPLE 3

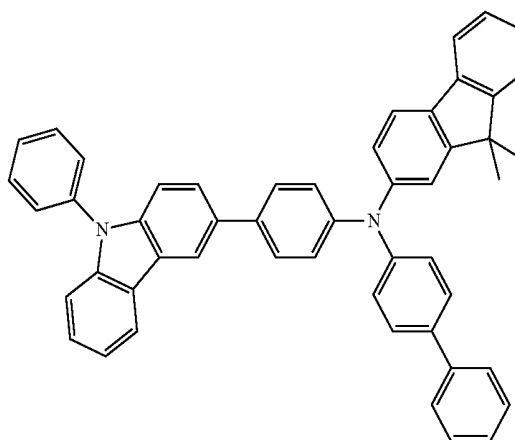
[0161] An OLED sample is manufactured in a substantially same manner as in Test Example 1, except that a hole injection layer **214** having a refractive index of about 1.4 and a thickness of about 12 nm was formed using the composition forming a hole transport layer of Test Example 1 and a hole transport layer **215** having a thickness of about 5 nm was formed thereon. The organic light emitting layer **212** is substantially the same as the organic light emitting layer **212** of Test Example 1, and was formed to have a thickness of about 30 nm.

[0162] When a current was applied at a current density of about 10 mA/cm<sup>2</sup> to the OLED sample (Test Example 3) prepared in such a manner, a driving voltage (V) and a current efficiency (cd/A, luminous efficiency) were evaluated. The results are shown in Table 1 below.

#### COMPARATIVE EXAMPLE 1

[0163] An OLED sample (Comparative Example 1) was manufactured in a substantially same manner as in Test Example 1, except that the compound represented by Chemical Formula 7 was deposited on a first electrode **211** to form a hole injection layer **214** having a thickness of about 5 nm and then a compound represented by the following Chemical Formula 10 was deposited thereon to form a hole transport layer **215** having a thickness of about 5 nm.

[Chemical Formula 10]



[0164] When a current was applied at a current density of about 10 mA/cm<sup>2</sup> to the OLED sample (Comparative Example 1) prepared in such a manner, a driving voltage (V) and a current efficiency (cd/A, luminous efficiency) were evaluated. The results are shown in Table 1 below.

## COMPARATIVE EXAMPLE 2

[0165] An OLED sample (Comparative Example 2) was manufactured in a substantially same manner as in Test Example 1, except that the compound represented by Chemical Formula 7 was deposited on a first electrode 211 to form a hole injection layer 214 having a thickness of about 12 nm and then the compound represented by Chemical Formula 10 was deposited thereon to form a hole transport layer 215 having a thickness of about 5 nm.

[0166] When a current was applied at a current density of about 10 mA/cm<sup>2</sup> to the OLED sample (Comparative Example 2) prepared in such a manner, a driving voltage (V) and a current efficiency (cd/A, luminous efficiency) were evaluated. The results are shown in Table 1 below.

TABLE 1

HIL/HTL		Refractive index (n)	Driving voltage (V)	Luminous efficiency (cd/A)
Method				
Test Example 1	Solution Method(Wet)	1.5	4.6	5.5
Test Example 2	Solution Method(Wet)	1.5	4.8	5.4
Test Example 3	Solution Method(Wet)	1.4	4.4	5.6
Comparative Example 1	Deposition(Dry)	1.6	(short)	(short)
Comparative Example 2	Deposition(Dry)	1.6	5.2	5.4

[0167] Referring to Table 1, in the case where the hole injection layer and the hole transport layer having a small thickness are formed by deposition, a short circuit occurs (Comparative Example 1). In addition, in the case where a hole injection layer and a hole transport layer having a large thickness are formed by deposition, a driving voltage increases (Comparative Example 2).

[0168] On the other hand, in the case where the hole transport layer is formed by the solution method (Test Examples 1, 2 and 3), a short circuit does not occur in the OLED, and the OLED is driven at a relatively low voltage and has high efficiency. In the case where the hole transport layer is formed by the solution method, such an effect may be achieved because the hole transport layer may cover a surface of the first electrode, for example, unevenness and foreign substances on a surface of the ITO layer.

[0169] In addition, according to Test Examples 1, 2 and 3, since the refractive indices of the hole injection layer and the hole transport layer are as small as about 1.6 or less, the optical distance for the primary resonance may be ensured even though the thickness of the hole injection layer and the hole transport layer is large.

[0170] Thus, according to exemplary embodiments, an OLED display device having a relatively low driving voltage, a long lifetime and high efficiency may be manufactured.

[0171] As set forth hereinabove, according to one or more exemplary embodiments, the OLED display device may be manufactured using both the solution method and the deposition method. The OLED display device according to an exemplary embodiment may have excellent luminous efficiency and a long lifetime.

[0172] While the inventive concept has been illustrated and described with reference to the exemplary embodiments thereof, it will be apparent to those of ordinary skill in the

art that various changes in form and detail may be made thereto without departing from the spirit and scope of the inventive concept.

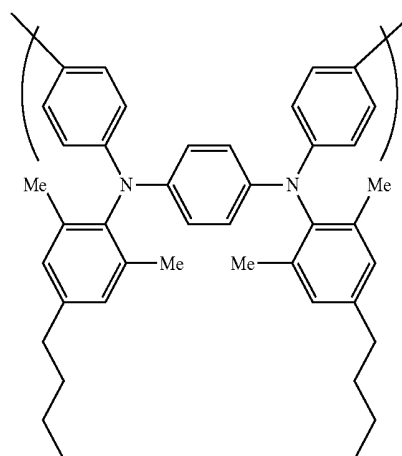
What is claimed is:

1. An organic light emitting diode display device comprising:

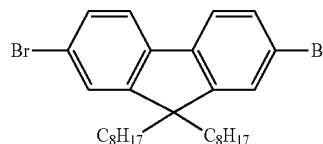
- a substrate;
- a first electrode on the substrate;
- a hole transport layer on the first electrode;
- an organic light emitting layer on the hole transport layer;
- and
- a second electrode on the organic light emitting layer,

wherein the hole transport layer comprises a hole transport layer composition comprising a compound represented by the following Chemical Formula 1, a compound represented by the following Chemical Formula 2, a compound represented by the following Chemical Formula 3, and a compound represented by the following Chemical Formula 4:

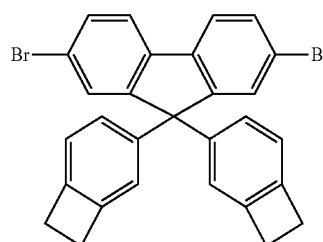
[Chemical Formula 1]



[Chemical Formula 2]

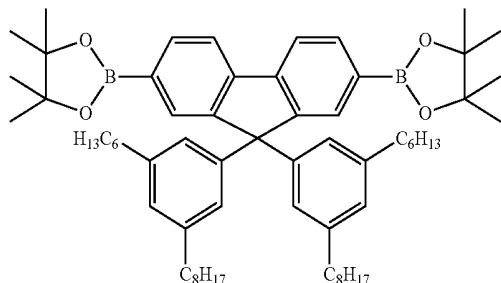


[Chemical Formula 3]



-continued

[Chemical Formula 4]



2. The organic light emitting diode display device as claimed in claim 1, wherein the hole transport layer is formed by coating and curing the hole transport layer composition.

3. The organic light emitting diode display device as claimed in claim 1, wherein the hole transport layer composition comprises the compound represented by Chemical Formula 1 in an amount ranging from about 25 percent by weight (wt %) to about 35 wt %, the compound represented by Chemical Formula 2 in an amount ranging from about 10 wt % to about 15 wt %, the compound represented by Chemical Formula 3 in an amount ranging from about 5 wt % to about 10 wt %, and the compound represented by Chemical Formula 4 in an amount ranging from about 40 wt % to about 60 wt %.

4. The organic light emitting diode display device as claimed in claim 1, wherein the hole transport layer has a refractive index of about 1.6 or less.

5. The organic light emitting diode display device as claimed in claim 1, wherein the hole transport layer has a thickness ranging from about 5 nm to about 10 nm.

6. The organic light emitting diode display device as claimed in claim 1, wherein the hole transport layer has a thickness ranging from about 100 nm to about 110 nm.

7. The organic light emitting diode display device as claimed in claim 1, wherein the organic light emitting layer is formed by depositing an organic light emitting material.

8. The organic light emitting diode display device as claimed in claim 1, further comprising a hole injection layer between the first electrode and the hole transport layer.

9. The organic light emitting diode display device as claimed in claim 8, wherein the hole injection layer is formed by coating and curing a solution comprising a hole injecting material.

10. The organic light emitting diode display device as claimed in claim 8, wherein the hole injection layer has a refractive index of about 1.6 or less.

11. The organic light emitting diode display device as claimed in claim 1, further comprising an electron transport layer between the organic light emitting layer and the second electrode.

12. The organic light emitting diode display device as claimed in claim 1, wherein the first electrode comprises a reflective layer and a light transmissive conductive layer on the reflective layer, and

the following Equation 2 is satisfied when an optical distance between a surface of the reflective layer opposing the second electrode and a surface of the

second electrode opposing the reflective layer is  $L1$  and a peak wavelength of a light generated in the organic emitting layer is  $\lambda 1$ ,

$$L1 = [(2m+1)/4] \times \lambda 1, \quad \text{[Equation 2]}$$

wherein  $m$  is an integer greater than or equal to zero.

13. A method of manufacturing an organic light emitting diode display device, the method comprising:

forming a first electrode on a substrate;

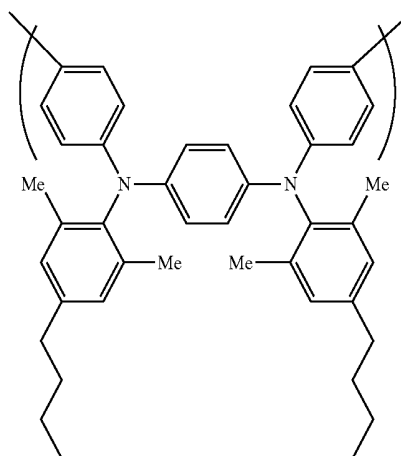
coating and curing a hole transport layer composition to form a hole transport layer on the first electrode;

depositing an organic light emitting material to form an organic light emitting layer on the hole transport layer; and

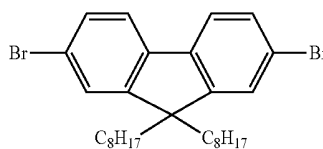
forming a second electrode on the organic light emitting layer,

wherein the hole transport layer composition comprises a compound represented by the following Chemical Formula 1, a compound represented by the following Chemical Formula 2, a compound represented by the following Chemical Formula 3, and a compound represented by the following Chemical Formula 4:

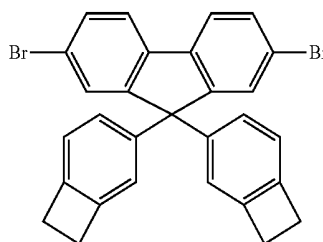
[Chemical Formula 1]



[Chemical Formula 2]

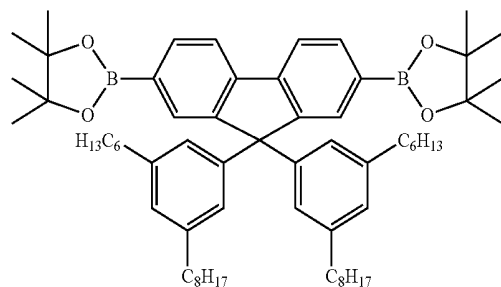


[Chemical Formula 3]



-continued

[Chemical Formula 4]



**14.** The method as claimed in claim **13**, wherein the hole transport layer composition comprises the compound represented by Chemical Formula 1 in an amount ranging from about 25 percent by weight (wt %) to about 35 wt %, the compound represented by Chemical Formula 2 in an amount ranging from about 10 wt % to about 15 wt %, the compound represented by Chemical Formula 3 in an amount ranging from about 5 wt % to about 10 wt %, and the compound represented by Chemical Formula 4 in an amount ranging from about 40 wt % to about 60 wt %.

**15.** The method as claimed in claim **13**, further comprising, after forming the first electrode and before forming the hole transport layer, forming a hole injection layer on the first electrode, using a solution comprising a hole injecting material.

\* \* \* \* \*

专利名称(译)	有机发光二极管显示装置及其制造方法		
公开(公告)号	<a href="#">US20180108858A1</a>	公开(公告)日	2018-04-19
申请号	US15/722543	申请日	2017-10-02
[标]申请(专利权)人(译)	三星显示有限公司		
申请(专利权)人(译)	三星DISPLAY CO., LTD.		
当前申请(专利权)人(译)	三星DISPLAY CO., LTD.		
[标]发明人	ITO NAOYUKI		
发明人	ITO, NAOYUKI		
IPC分类号	H01L51/50 H01L51/00		
CPC分类号	H01L51/5056 H01L51/0059 H01L51/0052 H01L2251/558 H01L51/0035 H01L51/0039 H01L51/0043 H01L51/506		
优先权	1020160132899 2016-10-13 KR		
其他公开文献	US10103346		
外部链接	<a href="#">Espacenet</a>	<a href="#">USPTO</a>	

摘要(译)

一种有机发光二极管显示装置，包括：基板；基板上的第一电极；第一电极上的空穴传输层；空穴传输层上的有机发光层；和有机发光层上的第二电极。空穴传输层包括空穴传输层组合物，其包含由化学式1表示的化合物，由化学式2表示的化合物，由化学式3表示的化合物和由化学式4表示的化合物。

